



COVID-19 Weekly Surveillance Report

Table of Contents

Summary for the week 24 July to 30 July 2023 (inclusive)	2
Case data	3
Figure 1. COVID-19 cases by notification week and test type, Western Australia, 03 January 2022 to 30 July 2023.....	3
Figure 2. COVID-19 cases by age group and sex, Western Australia, 24 July to 30 July 2023.....	4
Table 1. COVID-19 reinfections, Western Australia, 02 March 2022 to 30 July 2023.....	5
Figure 3. 7-day moving average of COVID-19 cases per 100,000 population by Australian jurisdiction, 01 December 2021 to 25 July 2023.....	6
Figure 4. 7-day moving average of COVID-19 age-specific rates per 100,000 population, Western Australia, 06 February 2022 to 30 July 2023.	6
Figure 5. 7-day moving average of COVID-19 case rates per 100,000 population by health region of residence, Western Australia, 06 February 2022 to 30 July 2023.	7
Table 2. Number of COVID-19 cases and rates per 100,000 population by reporting week and health region of residence, Western Australia.	8
Figure 6 (a). Locally acquired COVID-19 weekly case rates per 100,000 population by Local Government Area, Western Australia, 24 July to 30 July 2023.....	9
(b) Locally acquired COVID-19 weekly case rates per 100,000 population by Local Government Area, Perth metropolitan area, 24 July to 30 July 2023.....	9
Aboriginal case summary	10
Figure 7. COVID-19 case rates per 100,000 population and rate ratio by Aboriginal status and notification week, Western Australia, 09 October 2022 to 30 July 2023.....	10
Hospitalisations, intensive care unit (ICU) inpatients and deaths	11
Figure 8. 7-day average of COVID-19 cases currently in hospital or in ICU, 09 January 2022 to 30 July 2023.....	11
Table 3. Number of COVID-19 related deaths by sex and age group, 24 July to 30 July 2023 and 01 January 2022 to 30 July 2023.....	12
Testing data	13
Figure 9. Number of COVID-19 polymerase chain reaction tests and positivity by laboratory category and week of specimen collection, 09 February 2020 to 30 July 2023.	13
Appendix 1	14
Number of regional cases by postcode, 24 July – 30 July 2023.....	14

Summary for the week 24 July to 30 July 2023 (inclusive)

In the week of 24 July to 30 July 2023 there were:

- 628 COVID-19 cases reported
 - 137 diagnosed by polymerase chain reaction (PCR) tests
 - 491 diagnosed by rapid antigen tests (RAT)
- 217 were reinfections (see definition in Table 2)
- 25 new hospital admissions and 2 new admissions into an intensive care unit
- 61 deaths, aged 29 - 101 years old
- 4,369 COVID-19 PCR tests conducted

Surveillance summary

This week, **case numbers** decreased by 19% compared to the previous week. Cases diagnosed by PCR decreased by 28% and by RAT decreased by 15%. **Reinfections** comprised 35% of total cases this week, compared with 35% last week.

The number of **PCR tests** conducted decreased by 8% compared to the previous week, with a 7-day average positivity rate of 3.1%.

The moving seven-day average **case rate** per 100,000 population decreased in the Perth metropolitan, Midwest and Pilbara regions, remained steady in the Great Southern and Kimberley regions, and increased in the Goldfields, South West and Wheatbelt regions. The seven-day average case rate for the Perth metropolitan area (4 cases/100,000 population) is slightly higher than the non-metropolitan regions combined (2 cases/100,000 population).

The seven-day average **age-specific rate** decreased in the 10 – 19 and 50+ year age groups and remained steady in the 0 – 9 and 20 – 49 year age groups. The highest rates were in the 70+ age group (5 cases/100,000 population), and the lowest rates in the 0 - 9 years age group (2 cases/100,000 population).

The 7-day average of **hospitalised cases** decreased by 7% from 104 last week to 97 this week, and **intensive care unit cases** remained the same at 3 this week. **New hospital admissions** related to COVID-19 increased by 19% from 21 last week to 25 this week, and **direct intensive care unit admissions** increased from 1 last week to 2 this week.

Deaths increased this week with 61[#] deaths reported compared to 3 last week.

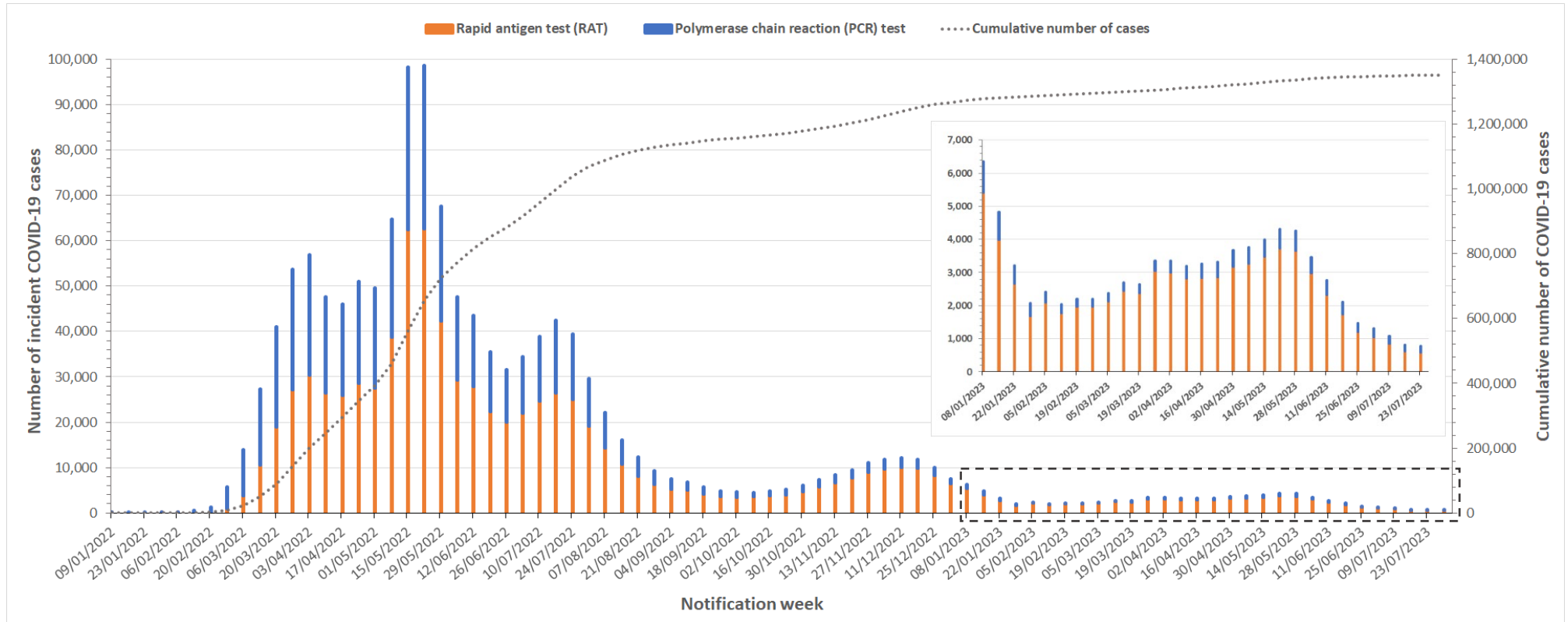
This week, 18 cases were reported in the **Aboriginal population**, a slight decrease compared to last week. Case rates in the Aboriginal population are lower than the non-Aboriginal population, with a 7-day average rate ratio of 0.7 this reporting week. There were 4 deaths reported in the Aboriginal population this week.

Nationally, the moving seven-day average case rates decreased in most jurisdictions, except Victoria and Northern Territory, which increased. Tasmania reported the highest rate (5 cases/100,000 population) and Victoria the lowest rate (2 cases/100,000 population). The rate in Western Australia was 3 cases/100,000 population.

[#] Please note that 58 deaths were reported this week following the receipt of historical death records and the conclusion of coronial investigations, where COVID-19 was attributed as a cause of death

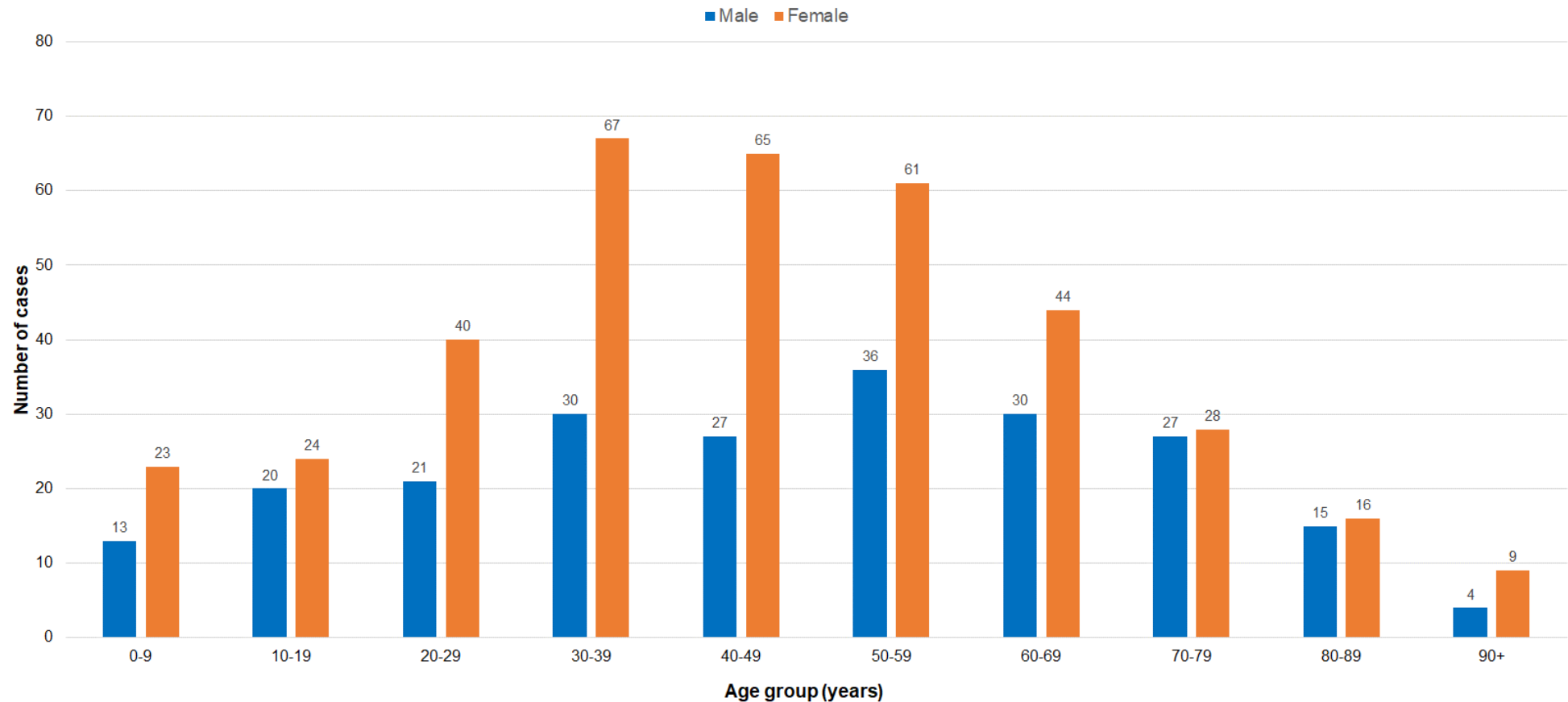
Case data

Figure 1. COVID-19 cases by notification week and test type, Western Australia, 03 January 2022 to 30 July 2023.



Notes
 Data sourced from Western Australia Department of Health dataset
 Following the resumption of large passenger cruise vessels entering WA waters on 24th October 2022, the daily and weekly number of COVID-19 notifications may intermittently be distorted by inclusion of vessel outbreak cases in WA data, irrespective of the place of residence of the cases
 Notification week refers to data reported over the 7 days Monday to Sunday.

Figure 2. COVID-19 cases by age group and sex, Western Australia, 24 July to 30 July 2023.



Notes
 Data sourced from Western Australia Department of Health dataset
 Following the resumption of large passenger cruise vessels entering WA waters on 24th October 2022, the daily and weekly number of COVID-19 notifications may intermittently be distorted by inclusion of vessel outbreak cases in WA data, irrespective of the place of residence of the cases
 Higher case numbers in females relative to males, particularly in those aged 20-69 years, are likely due to increased propensity of women to seek and undertake testing, whether by RAT or PCR, rather than true differences in the incidence of infection
 Sex data is partially incomplete due to the unavailability of this variable during rapid antigen test registration, resulting in a discrepancy to total case numbers reported for the week.

- Males: n=223 (37.2%) Females: n=377 (62.8%)
- Median age = 46 years; range: 0 to 98 years

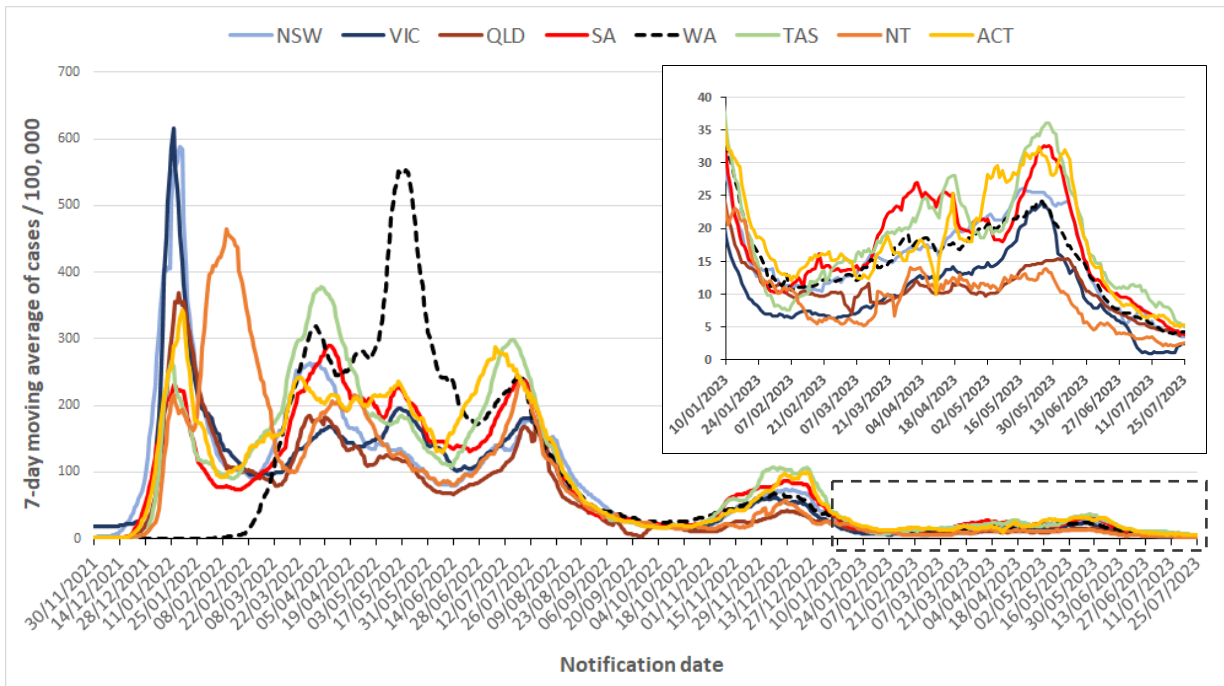
Table 1. COVID-19 reinfections, Western Australia, 02 March 2022 to 30 July 2023.

Month	Number of reinfections *
Mar-2022	14
Apr-2022	30
May-2022	122
Jun-2022	888
Jul-2022	5,095
Aug-2022	5,758
Sep-2022	4,064
Oct-2022	3,005
Nov-2022	7,155
Dec-2022	11,252
Jan-2023	5,529
Feb-2023	3,604
Mar-2023	5,043
Apr-2023	5,552
May-2023	7,532
June-2023	3,491
July-2023^	1,280
Total	69,414

* Reinfection definition: between 2nd March 2022 and 8th July 2022, COVID-19 reinfections were defined as a positive COVID-19 test that occurred more than 12 weeks after an initial infection. From 9 July 2022 to 13 October 2022, COVID-19 reinfections were defined as a positive COVID-19 test occurring 28 days after previously recovering from the virus. From 14 October 2022 to date, COVID-19 reinfections are defined as a positive COVID-19 test occurring 35 days after the date of positive test for the most recent infection. Sourced from [Series of National Guidelines \(SoNG\)](#)

^ Data up to 30th July 2023 inclusive

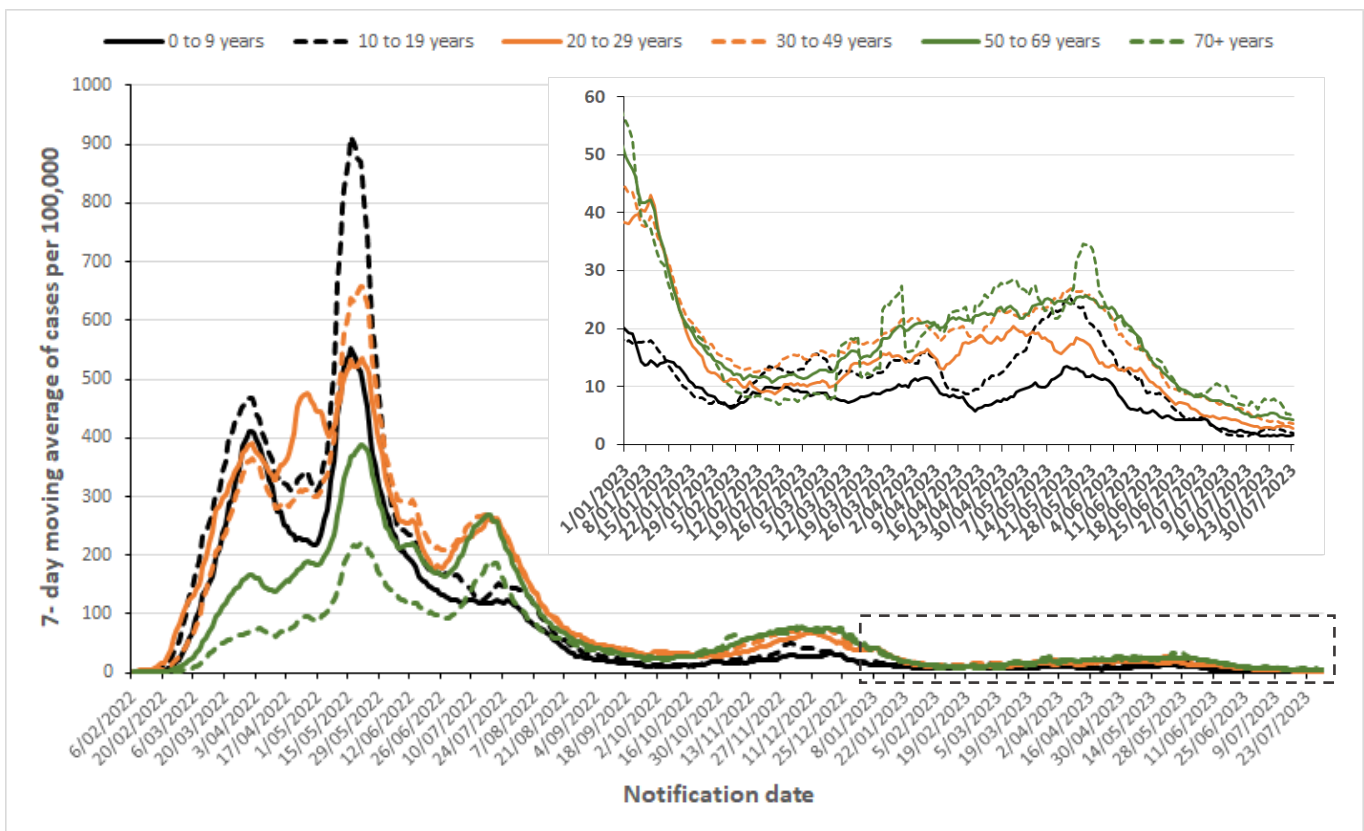
Figure 3. 7-day moving average of COVID-19 cases per 100,000 population by Australian jurisdiction, 01 December 2021 to 25 July 2023.



Notes

Data sourced from the jurisdictional health department datasets
 Notification date refers to the date that a case is notified to the relevant jurisdictional health department
 Data is only available up to and including Tuesday of current report week for all jurisdictions except Western Australia
 From 01 July 2023, Victoria ceased reporting COVID-19 cases determined by Rapid Antigen Tests
 Population denominators are sourced from Australian Bureau of Statistics December 2020 estimates.

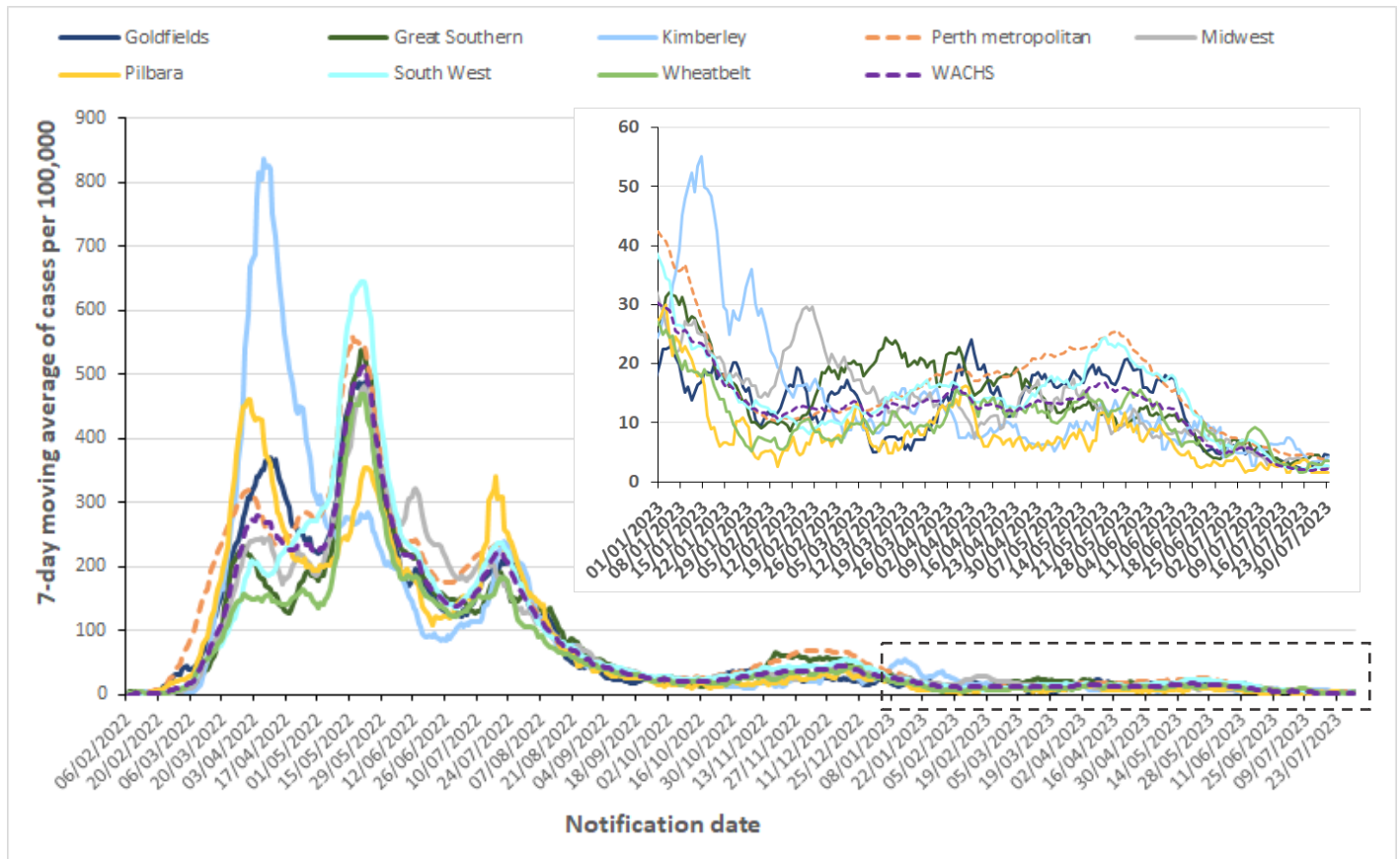
Figure 4. 7-day moving average of COVID-19 age-specific rates per 100,000 population, Western Australia, 06 February 2022 to 30 July 2023.



Notes

Data sourced from Western Australia Department of Health dataset
 Notification date refers to the date that a case is notified to Western Australia Department of Health
 Following the resumption of large passenger cruise vessels entering WA waters on 24th October 2022, the daily and weekly number of COVID-19 notifications may intermittently be distorted by inclusion of vessel outbreak cases in WA data, irrespective of the place of residence of the cases
 Population denominator sourced from Australian Bureau of Statistics June 2021 estimates.

Figure 5. 7-day moving average of COVID-19 case rates per 100,000 population by health region of residence, Western Australia, 06 February 2022 to 30 July 2023.



Notes
 Data sourced from Western Australia Department of Health dataset
 Notification date refers to the date that a case is notified to Western Australia Department of Health
 Western Australia Country Health Service (WACHS) region includes all non-metropolitan health regions: Central-Wheatbelt, Goldfields, Great Southern, Kimberley, Midwest, Pilbara and South West
 Perth metropolitan region includes East Metropolitan Health Service, North Metropolitan Health Service and South Metropolitan Health Service
 Population denominator sourced from Australian Bureau of Statistics 2020 estimates.

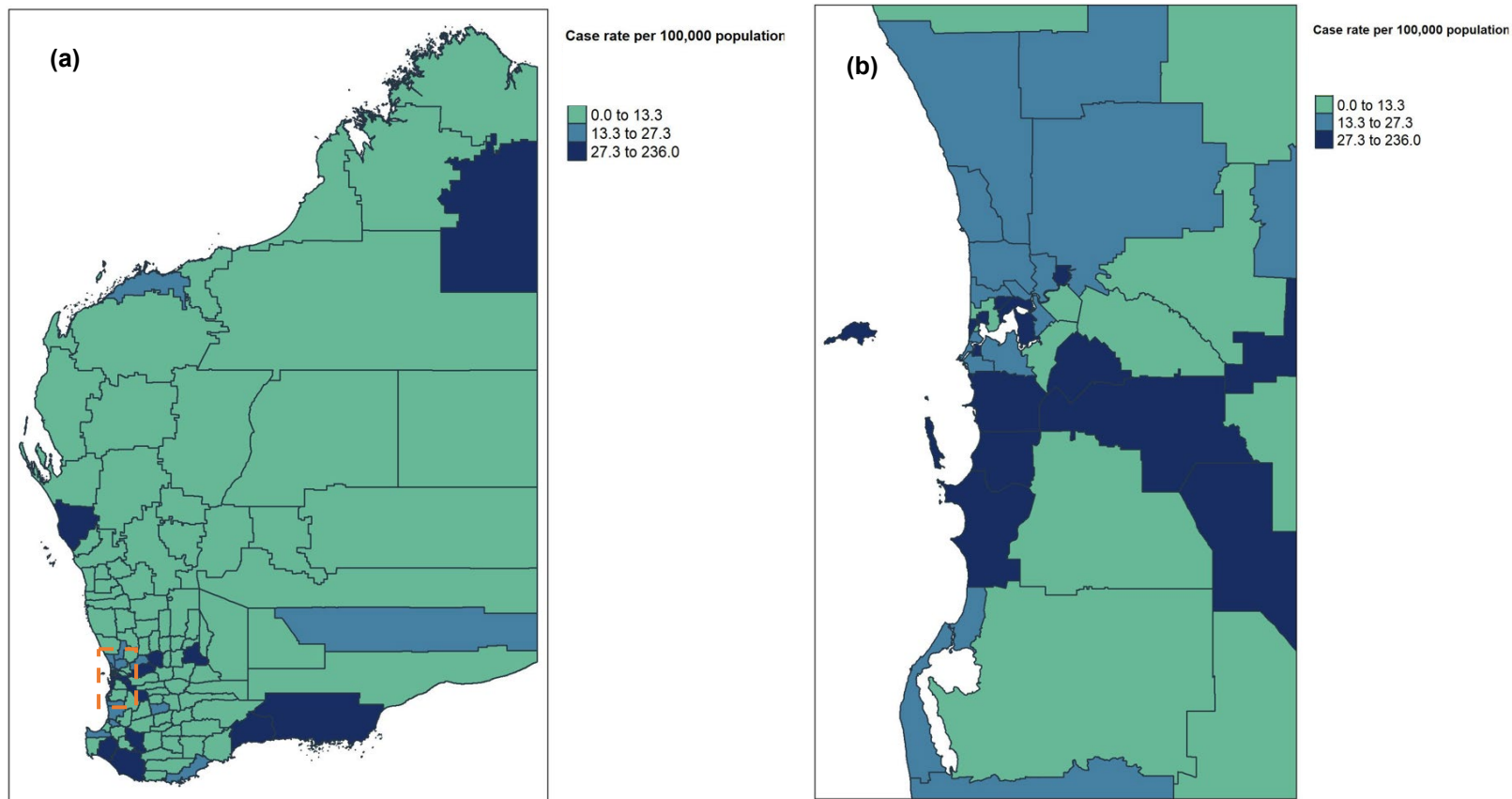
Table 2. Number of COVID-19 cases and rates per 100,000 population by reporting week and health region of residence, Western Australia.

Health Region		Current report week		Previous report week	
		Week 24 July to 30 July		Week 17 July to 23 July	
		Number	Rate [^]	Number	Rate [^]
Perth metropolitan region		538	25	691	32
WACHS Regions		82	15	75	14
	Goldfields	12	22	6	11
	Great Southern	11	18	10	16
	Kimberley	3	8	6	17
	Midwest	6	10	14	23
	Pilbara	7	11	7	11
	South West	35	19	28	15
	Wheatbelt	8	11	4	5
Other*		8	-	6	-
Total		628	23	772	29

Notes
 Data sourced from Western Australia Department of Health dataset
 Notification date refers to the date that a case is notified to Western Australia Department of Health
 Western Australia Country Health Service (WACHS) region includes all the non-metropolitan regions: Central-Wheatbelt, Goldfields, Great Southern, Kimberley, Midwest, Pilbara and South West
 Perth Metropolitan region includes East Metropolitan Health Service, North Metropolitan Health Service and South Metropolitan Health Service
 * Other includes cases with overseas and interstate residential addresses, and cases without residential address information
 ^ Rate reported as cases per 100,000 population. The total rate excludes "Other" cases, as there is no denominator population representing this group.
 Following the resumption of large passenger cruise vessels entering WA waters on 24th October 2022, the daily and weekly number of COVID-19 notifications may intermittently be distorted by inclusion of vessel outbreak cases in WA data, irrespective of the place of residence of the cases
 Population denominator is sourced from Australian Bureau of Statistics 2020 estimates.

Figure 6 (a). Locally acquired COVID-19 weekly case rates per 100,000 population by Local Government Area, Western Australia, 24 July to 30 July 2023.

(b) Locally acquired COVID-19 weekly case rates per 100,000 population by Local Government Area, Perth metropolitan area, 24 July to 30 July 2023.



Notes

Data sourced from Western Australia Department of Health dataset

Notification date refers to the date that a case is notified to Western Australia Department of Health

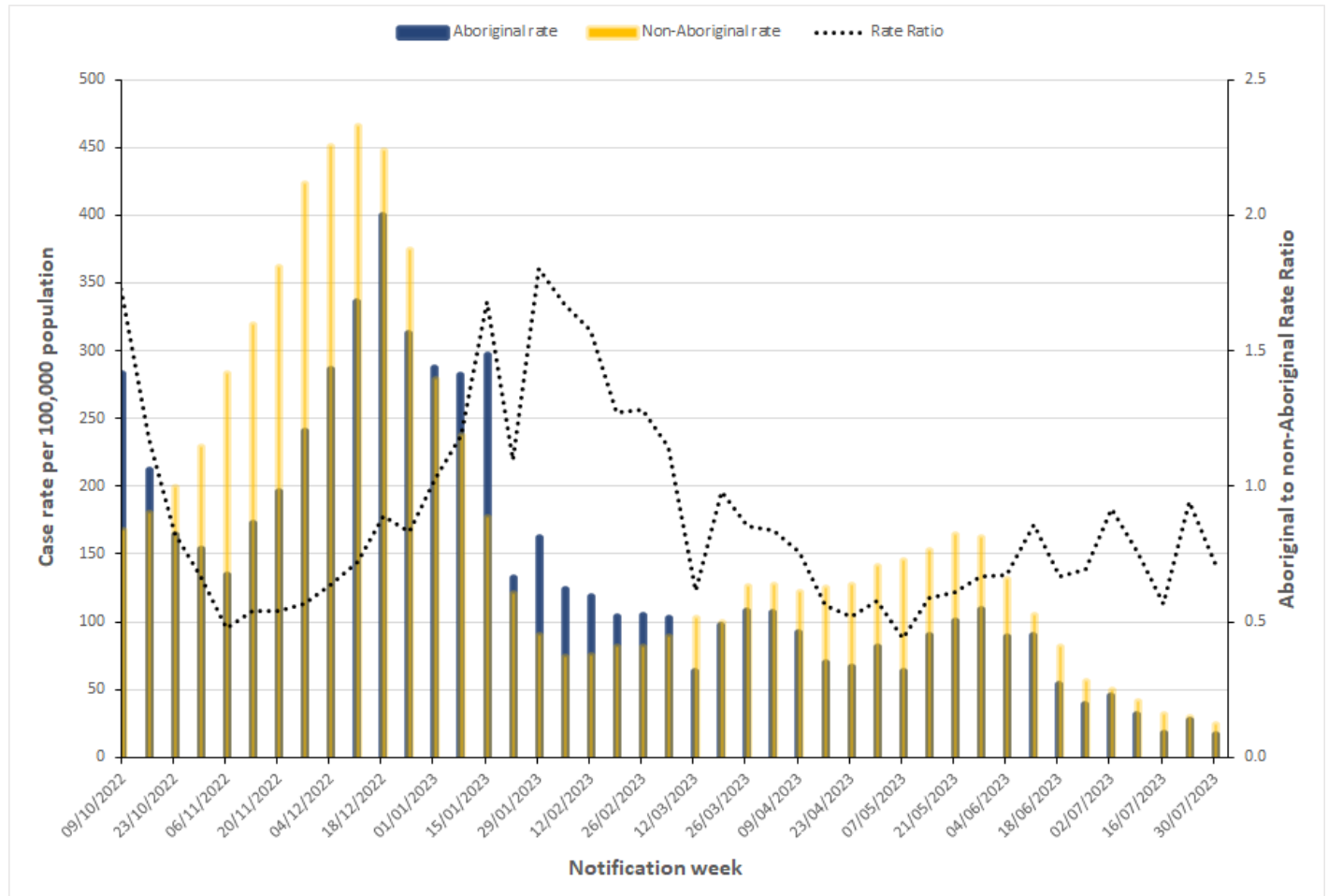
Areas on the map are defined by Local Government Area (LGA) boundaries

Cases are represented on the map according to their place of usual residence in an LGA (no information for specific location of acquisition)

Population denominator is sourced from Australian Bureau of Statistics 2020 estimates.

Aboriginal case summary

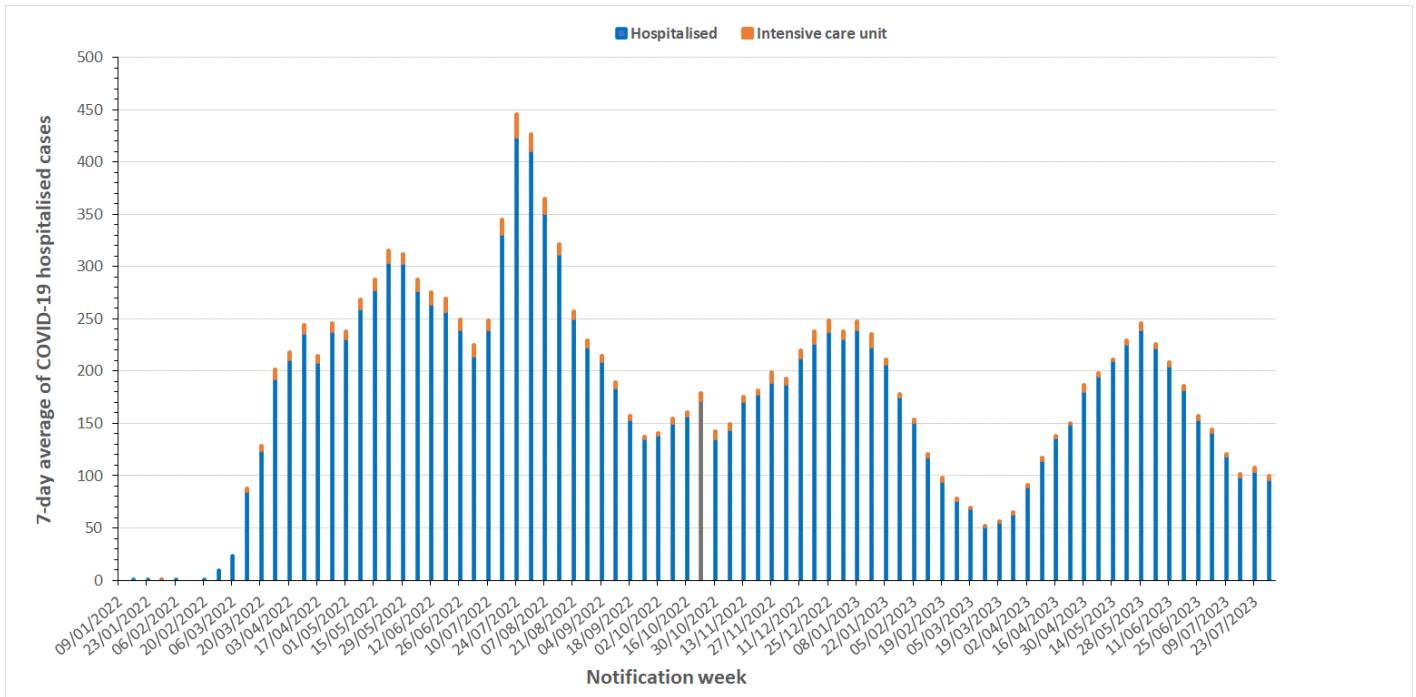
Figure 7. COVID-19 case rates per 100,000 population and rate ratio by Aboriginal status and notification week, Western Australia, 09 October 2022 to 30 July 2023.



Notes
 Data sourced from Western Australia Department of Health dataset
 Notification week refers to data reported over the 7 days Monday to Sunday
 Aboriginal status is defined as those who identify as 'Aboriginal and Torres Strait Islander (TSI) origin'/'Aboriginal but not TSI origin'/'TSI but not Aboriginal origin'
 Cases where Aboriginal status was not stated were designated as non-Aboriginal
 Population denominator data were sourced from Australian Bureau of Statistics 2020 estimates
 Rate ratio is calculated by dividing the Aboriginal rate by the non-Aboriginal rate, with a 7-day average of the respective rate ratios applied to smooth the trend

Hospitalisations, intensive care unit (ICU) inpatients and deaths

Figure 8. 7-day average of COVID-19 cases currently in hospital or in ICU, 09 January 2022 to 30 July 2023.



Notes

Data sourced from Western Australia Department of Health dataset
 Notification week refers to data reported over the 7 days Monday to Sunday
 'Hospitalised' relates to active and cleared COVID-19 cases that are current hospital inpatients. The reason for admission may be unrelated to COVID-19 for some people
 'Intensive care unit' (ICU) is a subset of hospitalised and relates to active/cleared COVID-19 cases that are currently in an ICU
 The definition of COVID-19 related hospitalisation was updated on 21 October 2022 to exclude cases where more than 60 days have passed since their positive COVID-19 test. This new definition more accurately captures cases in whom COVID-19 may have contributed to their reason for ongoing hospitalisation. Data reported after 21 October cannot be compared directly to data recorded prior to that date.

Table 3. Number of COVID-19 related deaths by sex and age group, 24 July to 30 July 2023 and 01 January 2022 to 30 July 2023.

	Current report week Week 24 July – 30 July 2023	Year 2022 to date 1 Jan 2022 – 30 July 2023
Sex	Deaths (n= 61) #	Deaths (n= 1,181)
Female	28 (45.9%)	577 (48.9%)
Male	33 (54.1%)	604 (51.1%)
Unspecified	0 (0%)	0 (0%)
Age group (years)		
0-9	0 (0%)	0 (0%)
10-19	0 (0%)	2 (0.2%)
20-29	1 (1.6%)	1 (0.1%)
30-39	1 (1.6%)	8 (0.7%)
40-49	0 (0%)	13 (1.1%)
50-59	1 (1.6%)	35 (3.0%)
60-69	3 (4.9%)	77 (6.5%)
70-79	12 (19.7%)	219 (18.5%)
80-89	22 (36.2%)	449 (38.0%)
90+	21 (34.4%)	377 (31.9%)

Notes

Please note that 58 deaths were reported this week following the receipt of historical death records and the conclusion of coronial investigations, where COVID-19 was attributed as a cause of death

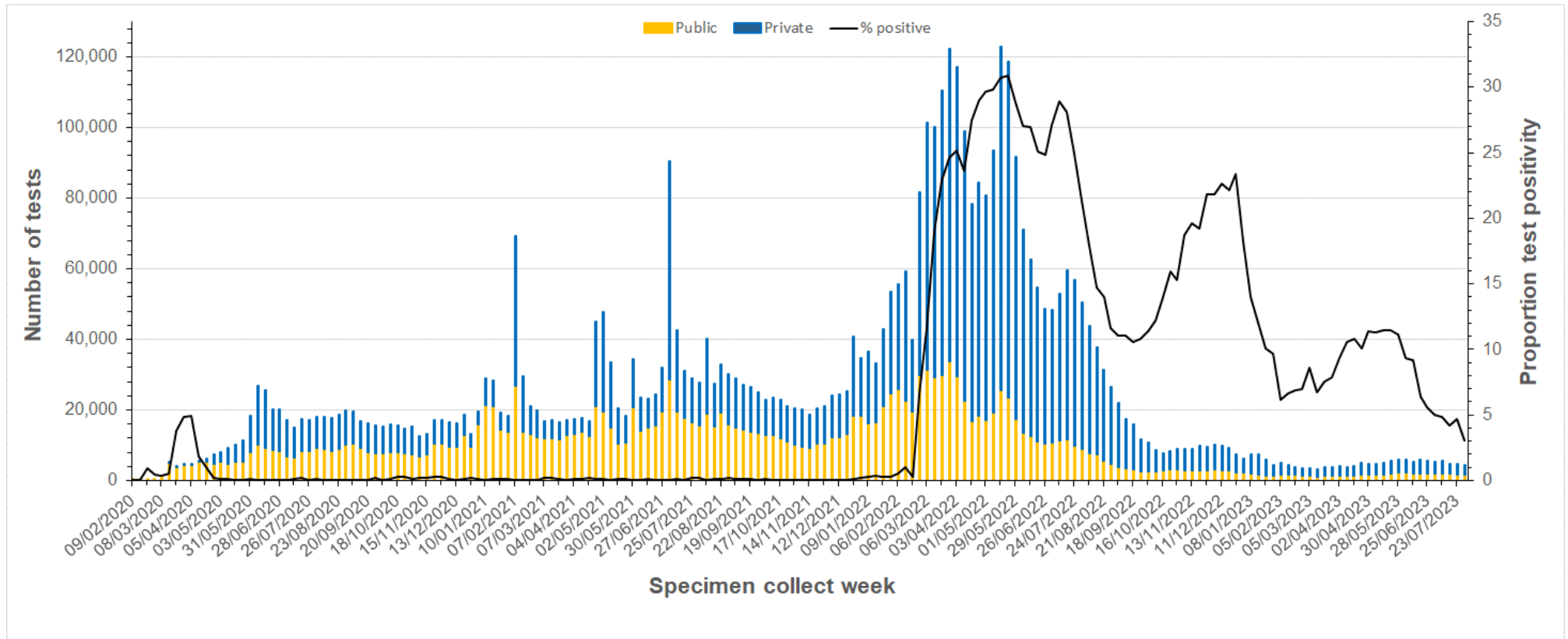
Data sourced from Western Australia Department of Health dataset

Deaths are counted by notification date and may include historical deaths that occurred (i.e. date of death) prior to the current report week

Deaths are not necessarily associated with hospital and/or ICU admissions

Testing data

Figure 9. Number of COVID-19 polymerase chain reaction tests and positivity by laboratory category and week of specimen collection, 09 February 2020 to 30 July 2023.



Notes

Data sourced from Western Australian public and private pathology laboratories

Specimen collect week refers to specimens collected between Monday to Sunday

Number of tests includes both positive and negative tests

From 01 October 2022, testing at private pathology providers requires a referral from a GP

From 03 March 2023, Murdoch COVID-19 public PCR testing clinic closed. From this time forward public access to COVID-19 PCR testing is only via GP referral to private pathology providers.

Appendix 1

Number of regional cases by postcode, 24 July – 30 July 2023

WACHS Regions	Postcode	Week 24 July to 30 July 2023
Goldfields	6430	<5
	6432	<5
	6450	6
Great Southern	6330	10
	6337	<5
Kimberley	6725	<5
	6765	<5
	6770	<5
Midwest	6530	<5
	6532	<5
Pilbara	6714	5
	6751	<5
	6753	<5
South West	6218	<5
	6230	10
	6232	<5
	6233	5
	6255	<5
	6258	<5
	6260	<5
	6275	<5
	6280	<5
	6281	6
	6285	<5
Wheatbelt	6302	<5
	6308	<5
	6312	<5
	6401	<5
	6407	<5
	6415	<5
	6502	<5
	6564	<5

Notes

Data sourced from Western Australia Department of Health dataset

Exact number of cases less than 5 not reported for confidentiality

Notification date refers to the date in which a case is notified to Western Australia Department of Health

Case data is based on the residential postcode of each case

Western Australia Country Health Service (WACHS) includes Goldfields, Great Southern, Kimberley, Midwest, Pilbara, South West and Wheatbelt public health regions

COVID-19 Weekly Surveillance Report

This document can be made available in alternative formats on request for a person with disability.

© Department of Health 2023

Copyright to this material is vested in the State of Western Australia unless otherwise indicated. Apart from any fair dealing for the purposes of private study, research, criticism or review, as permitted under the provisions of the *Copyright Act 1968*, no part may be reproduced or re-used for any purposes whatsoever without written permission of the State of Western Australia.

health.wa.gov.au